

# LAS1GQ

Metal Push Button



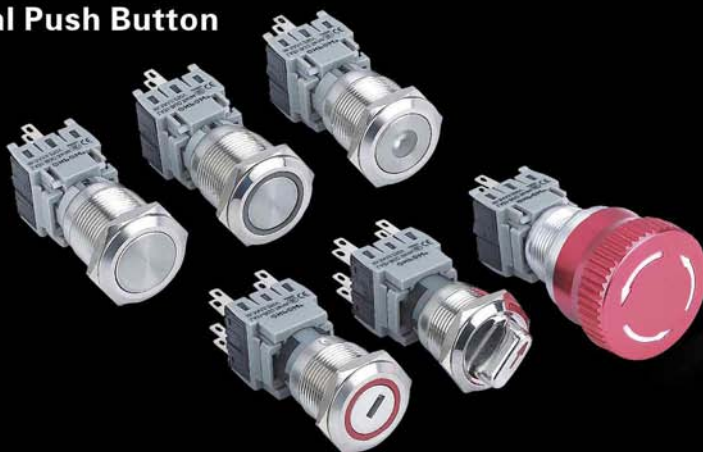
# LAS1-AGQ

Metal Push Button



# LAS1-BGQ

Metal Push Button



**Part-number Description**

| LAS1 - ★ ☆ - □ ■ / ◇ / ◆ ● / △ / ▲ / ○ |                  |   |  |  |                 |   |   |   |  |
|--|------------------|---|--|--|-----------------|---|---|---|--|
| Code of Series                         | Code name        | The Front shape   | Contact structure  | Operation mode   | Lamp type       | Operation position of selector and Key-lock type  | Lamp color  | Lamp voltage  | The Crust Material   |
|  | GQ<br>AGQ<br>BGQ | <b>H</b> High Round<br><b>PF</b> Super flat head+ flat actuator<br><b>PH</b> Super flat head+ high actuator<br><b>No letter here for selector switch, key lock switch and emergency stop switch</b> | 11 1NO1NC<br>22 2NO2NC<br>33 3NO3NC<br><b>See the detailed description which are available</b> | <b>Z</b> Latching type<br><b>X</b> Selector type<br><b>Y</b> Key-lock type<br><b>TS</b> Emergency stop<br><b>No letter means momentary</b> | D Dot<br>E Ring | ◆ <b>Operation position of selector and Key-lock type</b><br>2 Two position<br>3 Three position<br>● <b>Operation type of selector and Key-lock type</b><br>1 Maintain<br>2 Half return<br>3 Return | R Red<br>G Green<br>Y Yellow<br>O Orange<br>B Blue<br>W White | AC/DC 6V<br>AC/DC 12V<br>AC/DC 24V<br>AC/DC 110V<br>AC/DC 220V<br><b>Other voltage can be made to order</b> | <b>S</b> Stainless steel<br><b>A</b> Aluminium alloy(Black)<br><b>T</b> Aluminium alloy(White)<br><b>N</b> Nickel-plated brass |

**Note:** Please read the catalog carefully, and choose the right part-number according to the sign.

**LAS1GQ,LAS1-BGQ Switching Operation**

|                                    |               |                |     |      |           |
|------------------------------------|---------------|----------------|-----|------|-----------|
| <b>Rated Insulation Voltage Ui</b> |               | 250V           |     |      |           |
| <b>Thermal Current Ith</b>         |               | 5A             |     |      |           |
| <b>Rated voltage</b>               |               | 12V            | 24V | 110V | 220V      |
| <b>Rated Operation Current</b>     | AC<br>50/60Hz | Resistive load | —   | —    | 5A 3A     |
|                                    |               | Inductive load | —   | —    | 3A 2A     |
|                                    | DC            | Resistive load | 5A  | 5A   | 1A 0.5A   |
|                                    |               | Inductive load | 2A  | 2A   | 0.2A 0.1A |
| <b>Contact material</b>            |               | Silver Alloy   |     |      |           |

Minimum load: 3V AC/DC,5mA (Reference)  
Application scope depends on operating environment and load type

**LAS1-AGQ Switching Operation**

|                                    |               |                |      |      |           |
|------------------------------------|---------------|----------------|------|------|-----------|
| <b>Rated Insulation Voltage Ui</b> |               | 250V           |      |      |           |
| <b>Thermal Current Ith</b>         |               | 5A             |      |      |           |
| <b>Rated voltage</b>               |               | 12V            | 24V  | 110V | 220V      |
| <b>Rated Operation Current</b>     | AC<br>50/60Hz | Resistive load | —    | —    | 1A 0.5A   |
|                                    |               | Inductive load | —    | —    | 0.7A 0.5A |
|                                    | DC            | Resistive load | 1A   | 1A   | 0.2A —    |
|                                    |               | Inductive load | 0.7A | 0.7A | 0.1A —    |
| <b>Contact material</b>            |               | Silver Alloy   |      |      |           |

Minimum load: 3V AC/DC,5mA (Reference)  
Application scope depends on operating environment and load type

**Standard and Certificate**

| Standard               | Certification mark | Certification Authority/Number |
|------------------------|--------------------|--------------------------------|
| UL508                  |                    | UL/E254053 E344706             |
| EN61058                |                    | VDE/40001664                   |
| GB14048.5-2008         |                    | CCC/2011010305467129           |
| EN61058-1:2002+A2:2008 |                    | VOV/VT11018806                 |
| EN60947-1:2004         |                    | CTS/CTS070706-01006-E          |

**Performance Characteristic**

|                                  |  |
|----------------------------------|--|
| <b>Operating Temp</b>            | -25°C~+55°C ( Non freezing )<br>Keep the switch air circulating well |
| <b>Operating Humidity</b>        | 45~85%RH(Non condensing)   |
| <b>Contact Resistance</b>        | ≤50mΩ  |
| <b>Insulation Resistance</b>     | ≥1000MΩ  |
| <b>Max. withstanding voltage</b> | 2000V, AC50Hz, 5s  |
| <b>Vibration resistance</b>      | 50Hz, amplitude about 1.2mm  |
| <b>Shock resistance</b>          | > 10g  |
| <b>Solder resistance</b>         | 320°C (or 30W soldering iron) no more than 2s                        |

**Terminal Description**

**LAS1-GQ**

1, 2 are normal closed (NC)  
3, 4 are normal opened (NO)  
+, - are lamp terminals, the standard LED terminals have no difference of anode and cathode;  
The lamp and switch are relatively independent and can use switch or peripheral circuit to control the lamp state

**LAS1-AGQ**

Two sets at most  
C1NO1NC1 and C2NO2NC2 are one set respectively. C is common used, NO is normal opened, NC is normal closed;  
+- are lamp terminals, the standard LED have no difference of anode and cathode;  
Lamp and switch are relatively independent and can use switch or peripheral circuit to control the lamp state.

**LAS1-BGQ**

1,2,3,4 are one set; 1,2 are normal closed (NC);  
3,4 are normal opened (NO).The standard LED terminals have no difference of anode and cathode.  
The lamp and switch are relatively independent and can use switch or peripheral circuit to control the lamp state.

**Lamp Ratings**

|   |  |
|---|--|
| <b>Lamp Type</b>  | LED lamp (AC/DC)   |
| <b>LED Color</b>  |  |
| <b>Life</b>   | 40000 hours ( Reference )  |
| <b>Rated Voltage</b>  | AC/DC6V, AC/DC12V, AC/DC110V, AC/DC24V, AC/DC36V, AC/DC220V  |
| <b>Rated Current</b>  | About 15mA; About 2mA  |
| <b>Dropping Way</b>   | Inner resistor; Outer resistor to 6V LED   |
| <b>Lamp Circuit Diagram</b>                                 | Using AC/DC LED lamp, the terminals have no difference of anode and cathode: Using inner resistor, do not need connect outer resistor.<br> |
| <b>Note:</b> DC LED and other voltage can be made to order. |  |

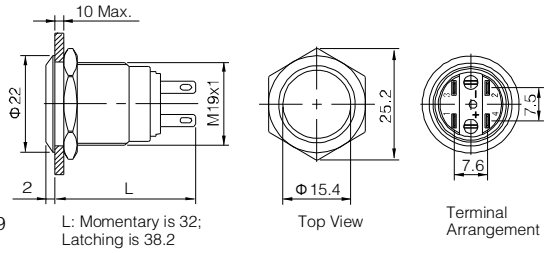
**Switching Operation**

|                |   |    |
|----------------|---|----|
| <b>Type</b>    | C | Za |
| <b>Diagram</b> |   |    |
| <b>Sign</b>    |   |    |



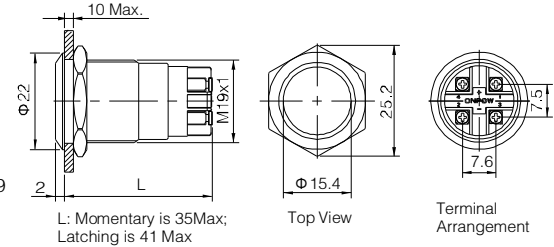
LAS1GQ-11■/○

- ◎ 19mm Diameter
- ◎ Switch Rating: Ith:5A, Ui:250V
- ◎ Contact Configuration: 1NO1NC
- ◎ Operation Type(■): Momentary/Latching(Z)
- ◎ The Crust Material(○): Stainless steel(S)/ Aluminium alloy black anodized (A)
- ◎ Terminal Type: Pin terminal(2.8X0.5)
- ◎ IP Degree: IP65(Momentary can be made IP67),IK09



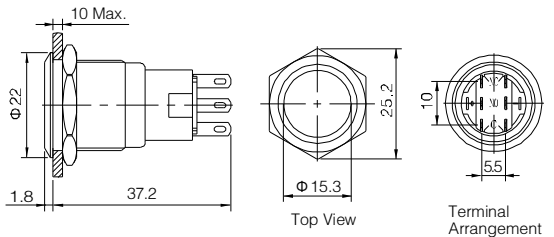
LAS1GQ-11■/L/S

- ◎ 19mm Diameter
- ◎ Switch Rating: Ith:5A, Ui:250V
- ◎ Contact Configuration: 1NO1NC
- ◎ Operation Type(■): Momentary/Latching(Z)
- ◎ The Crust Material: Stainless steel
- ◎ Terminal Type: Screw terminal
- ◎ IP Degree: IP65(Momentary can be made IP67),IK09



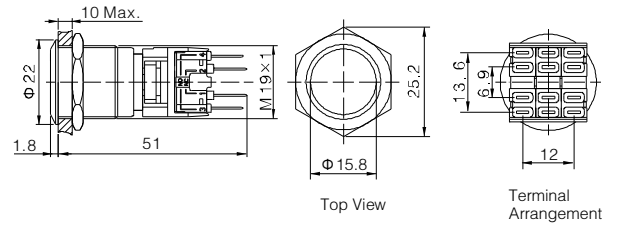
LAS1-AGQ-□■/○

- ◎ 19mm Diameter
- ◎ Switch Rating: Ith:5A, Ui:250V
- ◎ Contact Configuration(□): 1NO1NC(11) / 2NO2NC(22)
- ◎ Operation Type(■): Momentary/Latching(Z)
- ◎ The Crust Material(○): Stainless steel(S) / Nickel-plated brass(N) / Black anodized aluminium alloy(A)
- ◎ Terminal Type: Pin terminal(2.8X0.5)
- ◎ IP Degree: IP67,IK09



LAS1-BGQ-□■

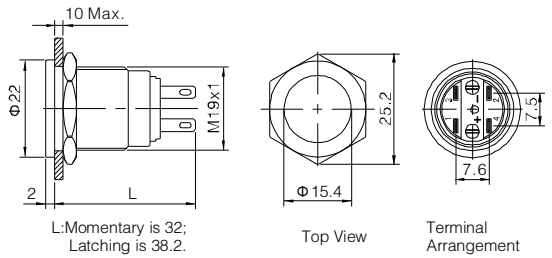
- ◎ 19mm Diameter
- ◎ Combined Structure
- ◎ Switch Rating: Ith:5A, Ui:250V
- ◎ Contact Configuration(□): 1NO1NC(11)/ 2NO2NC(22)/3NO3NC(33)
- ◎ Operation Type(■): Momentary/Latching(Z)
- ◎ The Crust Material: Stainless steel
- ◎ Terminal Type: Pin terminal(2.8X0.5)
- ◎ IP Degree: IP67,IK09



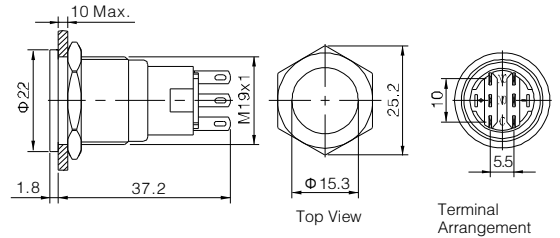
| LAS1GQ-11■/○<br>LAS1GQ-11■/L |   | Material         | Button  | Stainless steel/<br>Black anodized aluminium alloy | LAS1-AGQ-□■/○<br>LAS1-BGQ-□■   |   | Material  | Button             | Stainless steel/<br>Black anodized aluminium alloy                     |
|------------------------------|---|------------------|---|--|--|---|---|--------------------|--|
| Switching                    | Za(double-break fast-motion changeover contact)   |                  | Body  | Stainless steel/<br>Black anodized aluminium alloy | Switching  | C(single-break fast-motion changeover contact)(AGQ)<br>Za(double-break fast-motion changeover contact)(BGQ) |   | Body               | Stainless steel/Nickel-plated brass/<br>Black anodized aluminium alloy |
| Panel Thickness              | 1 ~ 10mm <th>Base</th> <td>PA/PC</td> <th>Operation Pressure</th> <td>About 4N <th>Operation Pressure</th> <td>3~5N(LAS1-AGQ)</td> <th>Operation Pressure</th> <td>5.5~8N(LAS1-BGQ)</td> </td>            | Base             | PA/PC   | Operation Pressure                                 | About 4N <th>Operation Pressure</th> <td>3~5N(LAS1-AGQ)</td> <th>Operation Pressure</th> <td>5.5~8N(LAS1-BGQ)</td> | Operation Pressure  | 3~5N(LAS1-AGQ)  | Operation Pressure | 5.5~8N(LAS1-BGQ)   |
| Mechanical Life              | 1,000,000 cycles <th>Operation Travel</th> <td>About 2.5mm <th>Operation Travel</th> <td>About 2.5mm <th>Panel Thickness</th> <td>1 ~ 10mm <th>Operation Travel</th> <td>About 3.1mm</td> </td></td></td> | Operation Travel | About 2.5mm <th>Operation Travel</th> <td>About 2.5mm <th>Panel Thickness</th> <td>1 ~ 10mm <th>Operation Travel</th> <td>About 3.1mm</td> </td></td> | Operation Travel                                   | About 2.5mm <th>Panel Thickness</th> <td>1 ~ 10mm <th>Operation Travel</th> <td>About 3.1mm</td> </td>             | Panel Thickness   | 1 ~ 10mm <th>Operation Travel</th> <td>About 3.1mm</td> | Operation Travel   | About 3.1mm  |
| Electrical Life              | 50,000 cycles <th></th> <td></td> <th>Mechanical Life</th> <td>1,000,000 cycles</td> <th>Electrical Life</th> <td>50,000 cycles</td> <th></th> <td></td>  |                  |   | Mechanical Life                                    | 1,000,000 cycles   | Electrical Life   | 50,000 cycles   |                    |  |
| Torque                       | 0.8Nm   |                  |   | Torque   | 0.8Nm  | Torque  | 0.8Nm   |                    |  |
|                              |   | RoHS             | Made to order   |  |  | RoHS  | Made to order   |                    |  |



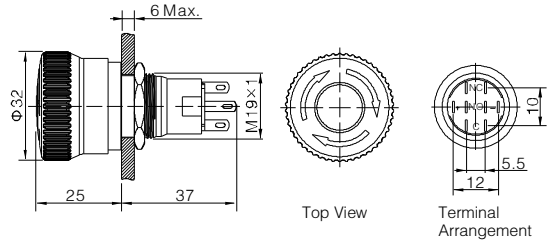
- ◎ 19mm Diameter
- ◎ Switch Rating: Ith:5A, Ui:250V
- ◎ Contact Configuration: 1NO1NC
- ◎ Operation Type(■): Momentary/Latching(Z)
- ◎ The Crust Material: Stainless steel
- ◎ Terminal Type: Pin terminal(2.8X0.5)
- ◎ IP Degree: IP65(Momentary can be made IP67),IK09



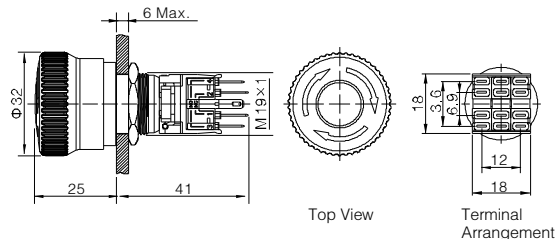
- ◎ 19mm Diameter
- ◎ Switch Rating: Ith:5A, Ui:250V
- ◎ Contact Configuration(□): 1NO1NC(11) / 2NO2NC(22)
- ◎ Operation Type(■): Momentary/Latching((Z)
- ◎ The Crust Material(◎): Stainless steel(S) / Nickel-plated brass(N)
- ◎ Terminal Type: Pin terminal(2.8X0.5)
- ◎ IP Degree: IP67,IK09



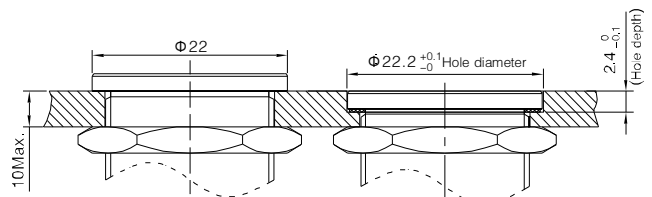
- ◎ 19mm Diameter
- ◎ Switch Rating: Ith:5A, Ui:250V
- ◎ Contact Configuration(□): 1NO1NC(11) / 2NO2NC(22)
- ◎ Operation Type: Push-lock Turn-reset
- ◎ The Crust Material: Aluminium Alloy
- ◎ Terminal Type: Pin terminal(2.8X0.5)
- ◎ IP Degree: IP65,IK02



- ◎ 19mm Diameter
- ◎ Combined Structure
- ◎ Switching Rating: Ith:5A, Ui:250V
- ◎ Contact Configuration(□): 1NO1NC(11) / 2NO2NC(22) / 3NO3NC(33)
- ◎ Operation Type: Push-lock Turn-reset
- ◎ The Crust Material: Aluminium Alloy
- ◎ Terminal Type: Pin terminal(2.8X0.5)
- ◎ IP Degree: IP65,IK02



**Installation of LAS1 super flat switch**



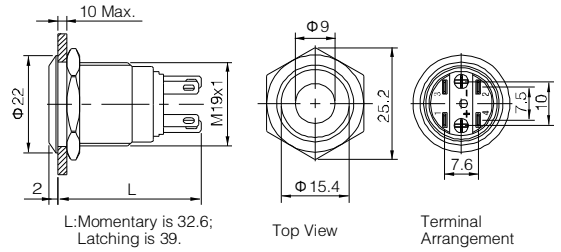
| LAS1GQPF-11■/◎<br>LAS1-AGQPF-□■/◎ |   | Material           | Button                | Stainless steel                     | LAS1-AGQ-□TS<br>LAS1-BGQ-□TS |  | Material           | Button             | Aluminium alloy  |
|-----------------------------------|---|--------------------|-----------------------|-------------------------------------|------------------------------|--|--------------------|--------------------|------------------|
| Switching                         | Za(double-break fast-motion changeover contact)(S1GQ) | Operation Pressure | Body                  | Stainless steel/Nickel-plated brass | Switching                    | C(single-break fast-motion changeover contact)(AGQ)  | Operation Pressure | Body               | Aluminium alloy  |
| Switching                         | C(single-break fast-motion changeover contact)(AGQ)   |                    | Base                  | PA/PC                               | Switching                    | Za(double-break fast-motion changeover contact)(BGQ) |                    | Operation Pressure | 5.5~8N(LAS1-BGQ) |
| Panel Thickness                   | 1 ~ 10mm  |                    | Operation Travel      | About 2.5mm(LAS1GQ)                 | Panel Thickness              | 1 ~ 10mm(LAS1-AGQ)                                   |                    | Operation Travel   | About 3.1mm      |
| Mechanical Life                   | 1,000,000 cycles                                      | Operation Travel   | About 3.1mm(LAS1-AGQ) | Panel Thickness                     | 1 ~ 6mm(LAS1-BGQ)            | Torque   | 0.8Nm              |                    |                  |
| Electrical Life                   | 50,000 cycles   |                    |                       | Mechanical Life                     | 200,000 cycles               |  |                    |                    |                  |
| Torque                            | 0.8Nm   | <b>RoHS</b>        | Made to order         | Electrical Life                     | 50,000 cycles                | <b>RoHS</b>  | Made to order      |                    |                  |





LAS1GQ-11 ■ D/Δ/▲/◎

- ◎ Indicator part number: LAS1GQ-D/Δ/▲/◎
- ◎ Φ 19mm Diameter
- ◎ Switch Rating: Ith:5A, Ui: 250V
- ◎ Contact Configuration: 1NO1NC
- ◎ Operation Type(■): Momentary / Latching(Z)
- ◎ LED Color(Δ): **R G Y O B W**
- ◎ LED Voltage(▲): 6V/12V/24V/110V/220V
- ◎ The Crust Material(◎): Stainless steel(S) / Black anodized aluminium alloy(A)
- ◎ Terminal Type: Pin terminal(2.8X0.5)
- ◎ IP Degree: IP65(Momentary can be made IP67),IK09



L: Momentary is 32.6; Latching is 39.

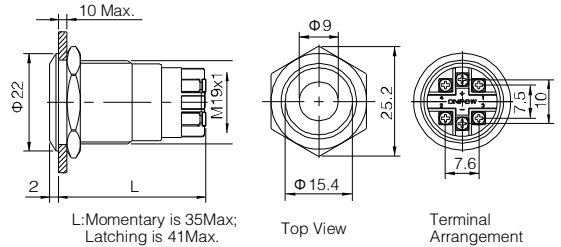
Top View

Terminal Arrangement



LAS1GQ-11 ■ D/L/Δ/▲/S

- ◎ Indicator part number: LAS1GQ-D/L/Δ/▲/◎
- ◎ Φ 19mm Diameter
- ◎ Switch Rating: Ith:5A, Ui:250V
- ◎ Contact Configuration: 1NO1NC
- ◎ Operation Type(■): Momentary/ Latching(Z)
- ◎ LED Color(Δ): **R G Y O B W**
- ◎ LED Voltage(▲): 6V/12V/24V/110V/220V
- ◎ The Crust steel
- ◎ Terminal Type: Screw terminal
- ◎ IP Degree: IP65(Momentary can be made IP67),IK09



L: Momentary is 35Max; Latching is 41Max.

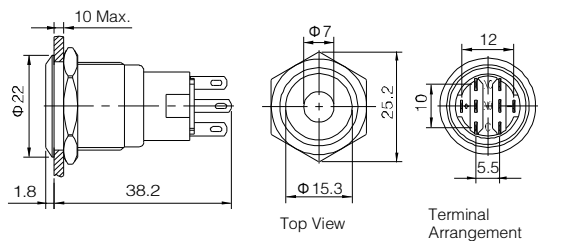
Top View

Terminal Arrangement



LAS1-AGQ-□ D/Δ/▲/◎

- ◎ Indicator part number: LAS1-AGQ-D/Δ/▲/◎
- ◎ Φ 19mm Diameter
- ◎ Switch Rating: Ith:5A, Ui:250V
- ◎ Contact Configuration(□): 1NO1NC(11) / 2NO2NC(22)
- ◎ Operation Type(■): Momentary/ Latching(Z)
- ◎ LED Color(Δ): **R G Y O B W**
- ◎ LED Voltage(▲): 6V/12V/24V/110V/220V
- ◎ The Crust Material(◎): Stainless steel(S) / Nickel-plated brass(N)Black anodized aluminium alloy(A)
- ◎ Terminal Type: Pin terminal(2.8X0.5)
- ◎ IP Degree: IP67,IK09



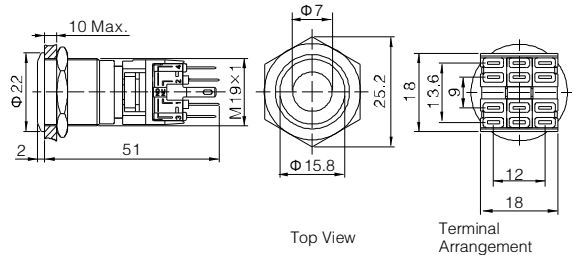
Top View

Terminal Arrangement



LAS1-BGQ-□ D/Δ/▲/S

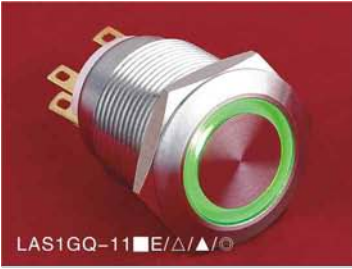
- ◎ Indicator part number: LAS1-BGQ-D/Δ/▲
- ◎ Φ 19mm Diameter
- ◎ Switch Rating: Ith:5A, Ui:250V
- ◎ Contact Configuration(□): 1NO1NC(11)/ 2NO2NC(22)/3NO3NC(33)
- ◎ Operation Type(■): Momentary/ Latching(Z)
- ◎ LED Color(Δ): **R G Y O B W**
- ◎ LED Voltage(▲): 6V/12V/24V/110V/220V
- ◎ The Crust Material: Stainless steel
- ◎ IP Degree: IP67,IK09



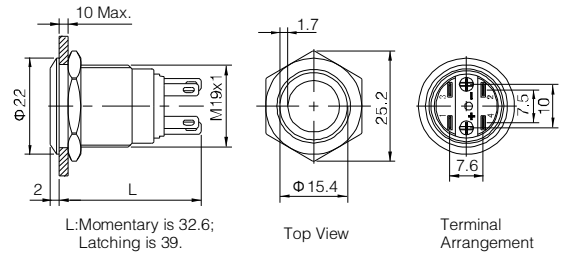
Top View

Terminal Arrangement

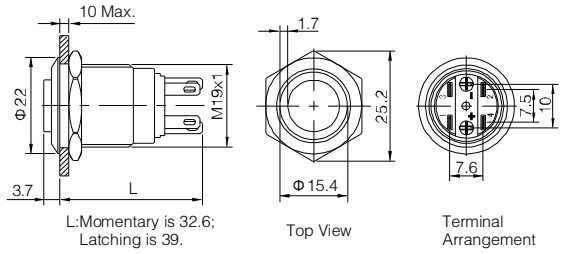
| LAS1GQ-11 ■ D/Δ/▲/◎<br>LAS1GQ-11 ■ D/L/Δ/▲ |   | Material           | Button              | Stainless steel/<br>Black anodized aluminium alloy | LAS1-AGQ-□ D/Δ/▲/◎<br>LAS1-BGQ-□ D/Δ/▲ |   | Material | Button             | Stainless steel/<br>Black anodized aluminium alloy                     |
|--|---|--------------------|---------------------|--|--|---|----------|--------------------|--|
| Switching                                  | Za(double-break fast-motion changeover contact) |                    | Body                | Stainless steel/<br>Black anodized aluminium alloy | Switching                              | C(Single-break fast-motion changeover contact)(AGQ)<br>Za(double-break fast-motion changeover contact)(BGQ) |          | Body               | Stainless steel/Nickel-plated brass/<br>Black anodized aluminium alloy |
| Panel Thickness                            | 1 ~ 10mm(LAS1GQ)                                | Operation Pressure | About 4N(LAS1GQ)    | Operation Pressure                                 | 3~5N(LAS1-AGQ)                         | Base  | PBT/PA   | Operation Pressure | 5.5~8N(LAS1-BGQ)   |
| Mechanical Life                            | 0.8Nm   | Operation Travel   | About 2.5mm(LAS1GQ) | Operation Travel                                   | About 3.1mm                            |   |          | Operation Travel   | About 3.1mm  |
| Electrical Life                            | 1,000,000 cycles                                |                    |                     |  |  |   |          |                    |  |
| Torque                                     | 50,000 cycles                                   |                    |                     |  |  |   |          |                    |  |
|  |   | <b>RoHS</b>        | Made to order       | <b>RoHS</b>  | Made to order                          |   |          |                    |  |



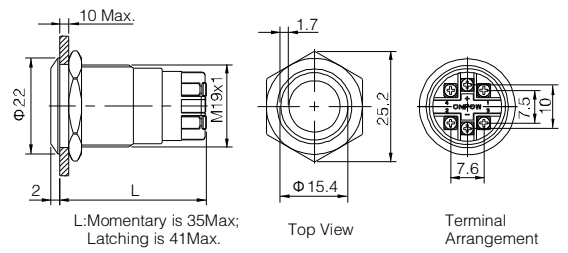
- Indicator part number: LAS1GQ-E/Δ/▲/○
- Φ 19mm Diameter
- Switch Rating: Ith:5A, Ui:250V
- Contact Configuration: 1NO1NC
- Operation Type(■): Momentary / Latching(Z)
- LED Color(Δ): R G Y O B W
- LED Voltage(▲): 6V/12V/24V/110V/220V
- The Crust Material(◎): Stainless steel(S) / Black anodized aluminium alloy(A)
- Terminal Type: Pin terminal(2.8X0.5)
- IP Degree: IP65(Momentary can be made IP67),IK09



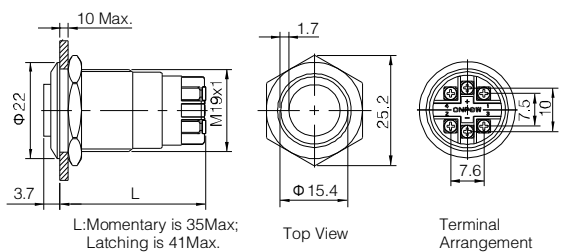
- Indicator part number: LAS1GQH-E/Δ/▲/○
- Φ 19mm Diameter
- Switch Rating: Ith:5A, Ui:250V
- Contact Configuration: 1NO1NC
- Operation Type(■): Momentary / Latching(Z)
- LED Color(Δ): R G Y O B W
- LED Voltage(▲): 6V/12V/24V/110V/220V
- The Crust Material(◎): Stainless steel(S) / Black anodized aluminium alloy(A)
- Terminal Type: Pin terminal(2.8X0.5)
- IP Degree: IP65(Momentary can be made IP67),IK09



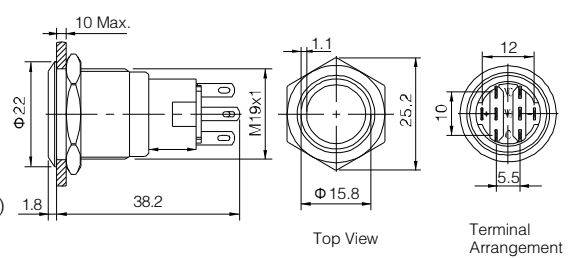
- Indicator part number: LAS1GQ-E/L/Δ/▲/S
- Φ 19mm Diameter
- Switch Rating: Ith:5A, Ui:250V
- Contact Configuration: 1NO1NC
- Operation Type(■): Momentary / Latching(Z)
- LED Color(Δ): R G Y O B W
- LED Voltage(▲): 6V/12V/24V/110V/220V
- The Crust Material: Stainless steel
- Terminal Type: Screw terminal
- IP Degree: IP65(Momentary can be made IP67),IK09



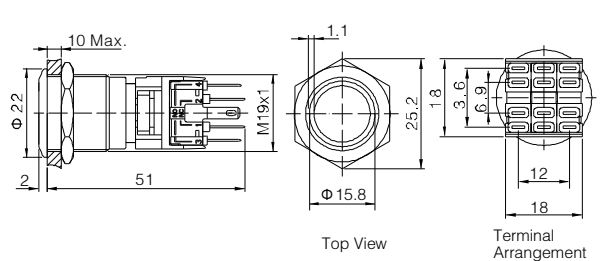
- Indicator part number: LAS1GQH-E/L/Δ/▲/S
- Φ 19mm Diameter
- Switch Rating: Ith:5A, Ui:250V
- Contact Configuration: 1NO1NC
- Operation Type(■): Momentary / Latching(Z)
- LED Color(Δ): R G Y O B W
- LED Voltage(▲): 6V/12V/24V/110V/220V
- The Crust Material: Stainless steel
- Terminal Type: Screw terminal
- IP Degree: IP65(Momentary can be made IP67),IK09



- Indicator part number: LAS1-AGQ-□ E/Δ/▲/○
- Φ 19mm Diameter
- Switch Rating: Ith:5A, Ui:250V
- Contact Configuration(□): 1NO1NC(11)/2NO2NC(22)
- Operation Type(■): Momentary / Latching(Z)
- LED Color(Δ): R G Y O B W
- LED Voltage(▲): 6V/12V/24V/110V/220V
- The Crust Material(◎): Stainless steel(S) / Nickel-plated brass(N)/Black anodized aluminium alloy(A)
- Terminal Type: Pin terminal(2.8X0.5)
- IP Degree: IP67,IK09



- Indicator part number: LAS1-BGQ-□ E/Δ/▲/S
- Φ 19mm Diameter
- Switch Rating: Ith:5A, Ui:250V
- Contact Configuration(□): 1NO1NC(11) / 2NO2NC(22) / 3NO3NC(33)
- Operation Type(■): Momentary / Latching(Z)
- LED Color(Δ): R G Y O B W
- LED Voltage(▲): 6V/12V/24V/110V/220V
- The Crust Material: Stainless steel
- Terminal Type: Pin terminal(2.8X0.5)
- IP Degree: IP67,IK09



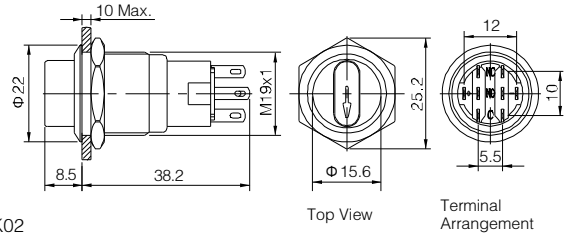
| LAS1GQ-11 ■ E/Δ/▲/○<br>LAS1GQH-11 ■ E/Δ/▲/○<br>LAS1GQ-11 ■ E/L/Δ/▲/S<br>LAS1GQH-11 ■ E/L/Δ/▲/S |   | Material           | Button | Stainless steel/<br>Black anodized aluminium alloy | LAS1-AGQ-□ ■ E/Δ/▲/○<br>LAS1-BGQ-□ ■ E/Δ/▲/S |  | Material           | Button | Stainless steel/<br>Black anodized aluminium alloy                     |
|--|---|--------------------|--------|--|--|--|--------------------|--------|--|
| Switching  | Za(double-break fast-motion changeover contact) |                    | Body   | Stainless steel/<br>Black anodized aluminium alloy | Switching                                    | C(Single-break fast-motion changeover contact)(AGQ)  |                    | Body   | Stainless steel/Nickel-plated brass/<br>Black anodized aluminium alloy |
| Panel Thickness  | 1 ~ 10mm(LAS1GQ)                                |                    | Base   | PA/PC  | Switching                                    | Za(double-break fast-motion changeover contact)(BGQ) |                    | Base   | PBT/PA   |
| Mechanical Life  | 1,000,000 cycles                                | Operation Pressure |        |  | Panel Thickness                              | 1 ~ 10mm   | Operation Pressure |        | 3~5N(LAS1-AGQ)   |
| Electrical Life  | 50,000 cycles                                   | Operation Travel   |        |  | Mechanical Life                              | 1,000,000 cycles                                     | Operation Pressure |        | 5.5~8N(LAS1-BGQ)   |
| Torque   | 0.8Nm   |                    |        |  | Electrical Life                              | 50,000 cycles  | Operation Travel   |        | About 3.1mm  |
|  |   |                    |        |  | Torque                                       | 0.8Nm  |                    |        |  |
|  |   |                    |        | <b>RoHS</b>  |  |  |                    |        | <b>RoHS</b>  |
|  |   |                    |        | Made to order                                      |  |  |                    |        | Made to order  |



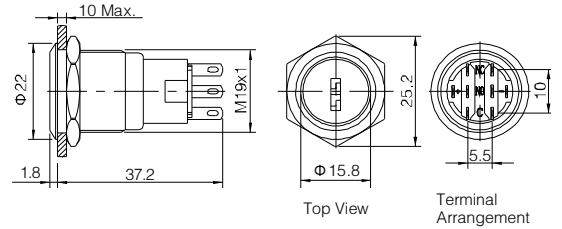




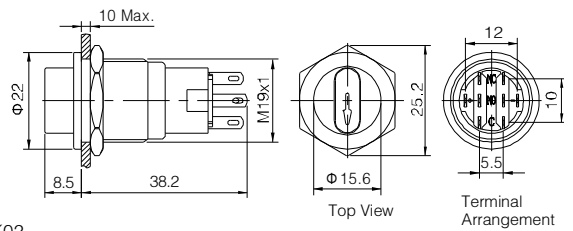
- Φ 19mm Diameter
- Switch Rating: Ith:5A, Ui:250V
- Contact Configuration(□): 1NO1NC(11)/2NO2NC(22)
- Operation Position(◆●): 2 positions maintain(21)/ 2 positions return(23) / 3 positions maintain(31)
- LED Color(Δ): R G Y O B W
- LED Voltage(▲): 6V/12V/24V/110V/220V
- The Crust Material(○): Stainless steel(S)/ Nickel-plated brass(N)
- Terminal Type: Pin terminal(2.8X0.5)
- IP Degree(☆): IP40(IP65/IP67 can be made to order),IK02



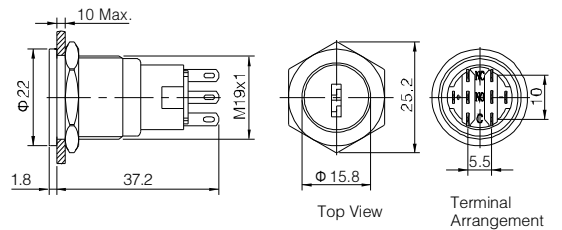
- Φ 19mm Diameter
- Switch Rating: Ith:5A, Ui:250V
- Contact Configuration(□): 1NO1NC(11)/2NO2NC(22)
- Operation Position(◆●): 2 positions maintain(21)/ 2 positions return(23) / 3 positions maintain(31)
- The Crust Material(○): Stainless steel(S)/ Nickel-plated brass(N)
- Terminal Type: Pin terminal(2.8X0.5)
- IP Degree: IP40(IP65 can be made to order),IK02



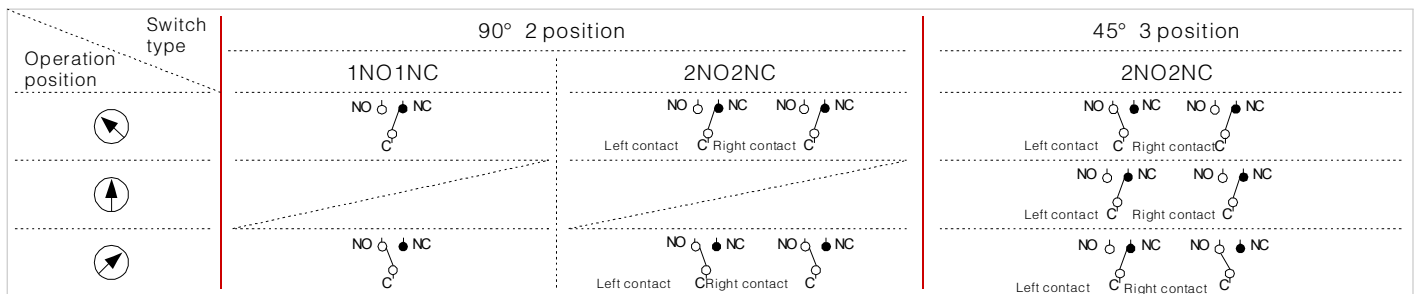
- Φ 19mm Diameter
- Switch Rating: Ith:5A, Ui:250V
- Contact Configuration(□): 1NO1NC(11)/2NO2NC(22)
- Operation Position(◆●): 2 positions maintain(21)/ 2 positions return(23) / 3 positions maintain(31)
- LED Color(Δ): R G Y O B W
- LED Voltage(▲): 6V/12V/24V/110V/220V
- The Crust Material(○): Stainless steel(S)/ Nickel-plated brass(N)
- Terminal Type: Pin terminal(2.8X0.5)
- IP Degree(☆): IP40(IP65/IP67 can be made to order),IK02



- Φ 19mm Diameter
- Switch Rating: Ith:5A, Ui:250V
- Contact Configuration(□): 1NO1NC(11)/2NO2NC(22)
- Operation Position(◆●): 2 positions maintain(21)/ 2 positions return(23) / 3 positions maintain(31)
- The Crust Material(○): Stainless steel(S)/ Nickel-plated brass(N)
- Terminal Type: Pin terminal(2.8X0.5)
- IP Degree: IP40(IP65 can be made to order),IK02

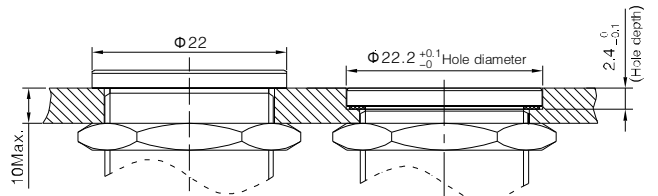


**LAS1-AGQ selector switch and keylock switch state chart in operation**



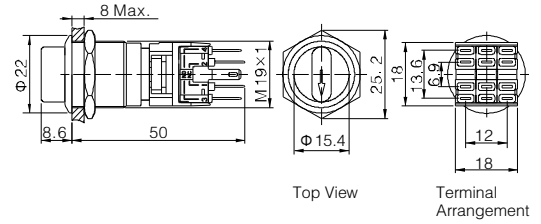
|                       |          |        |  |
|-----------------------|----------|--------|--|
| LAS1-AGQ-□X/◆●/▲/☆/○  | Material | Button | Stainless steel                                |
| LAS1-AGQ-□Y/◆●/○      |          | Body   | Stainless steel                                |
| LAS1-AGQP-□X/◆●/▲/☆/○ |          | Base   | PBT/PA   |
| LAS1-AGQP-□Y/◆●/○     |          |        |  |
| Switching             |          |        | C(Single-break fast-motion changeover contact) |
| Panel Thickness       |          |        | 1 ~ 10mm                                       |
| Mechanical Life       |          |        | 1,000,000 cycles                               |
| Electrical Life       |          |        | 50,000 cycles                                  |
| Torque                |          |        | 0.8Nm  |
|                       |          | RoHS   | Made to order                                  |

**Installation of LAS1-AGQ super flat switch**

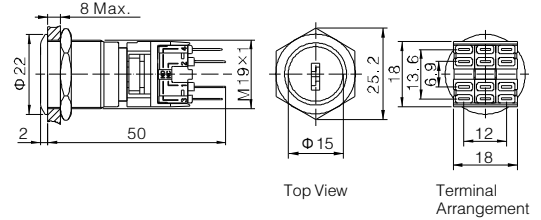




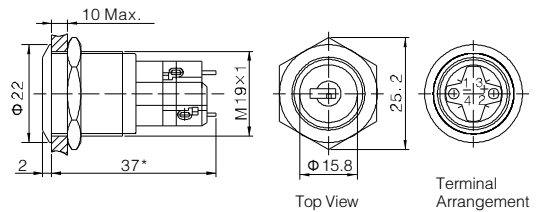
- ⊙ Φ19mm Diameter
- ⊙ Combined Structure
- ⊙ Switch Rating: Ith:5A, Ui:250V
- ⊙ Contact Configuration(□): 1NO1NC(11)/2NO2NC(22) / 3NO3NC(33)
- ⊙ Operation Position(◆): Two Position(2)/Three Position(3)
- ⊙ Operation Type(●): Maintain(1)/Half Return(2)/Return(3)
- ⊙ The Crust Material: Stainless steel
- ⊙ Terminal Type: Pin terminal(2.8X0.5)
- ⊙ IP Degree: IP40,IK02



- ⊙ Φ19mm Diameter
- ⊙ Combined Structure
- ⊙ Switch Rating: Ith:5A, Ui:250V
- ⊙ Contact Configuration(□): 1NO1NC(11)/2NO2NC(22) / 3NO3NC(33)
- ⊙ Operation Position(◆): Two Position(2)/Three Position(3)
- ⊙ Operation Type(●): Maintain(1)/Half Return(2)/Return(3)
- ⊙ The Crust Material: Stainless steel
- ⊙ Terminal Type: Pin terminal(2.8X0.5)
- ⊙ IP Degree: IP40,IK02



- ⊙ Φ19mm Diameter
- ⊙ Switch Rating: Ith:5A, Ui: 250V
- ⊙ Contact Configuration(□): 1NO1NC(11)/2NO2NC(22)
- ⊙ Two position Maintain
- ⊙ The Crust Material: Stainless steel
- ⊙ Terminal Type: Pin terminal
- ⊙ IP Degree: IP40,IK02



Note: The product add one switch unit, the length(\*) will add 7.5

**LAS1GQ,LAS1-BGQ selector switch and keylock switch state chart in operation**

| Operation position \ Switch type | 90° 2 position |                  |                         | 90° 3 position   |                  |                  |                         |
|----------------------------------|----------------|------------------|-------------------------|------------------|------------------|------------------|-------------------------|
|                                  | 1NO1NC         | 2NO2NC           | 3NO3NC                  | 2NO2NC           | 2NO2NC           | 2NO2NC           | 3NO3NC                  |
| ↻                                | ●●<br>○ ○      | ●● ●●<br>○ ○ ○ ○ | ●● ●● ●●<br>○ ○ ○ ○ ○ ○ | ●● ●●<br>○ ○ ○ ○ | ●● ●●<br>○ ○ ○ ○ | ●● ●●<br>○ ○ ○ ○ | ●● ●● ●●<br>○ ○ ○ ○ ○ ○ |
| ↑                                | ●●<br>○ ○      | ●● ●●<br>○ ○ ○ ○ | ●● ●● ●●<br>○ ○ ○ ○ ○ ○ | ●● ●●<br>○ ○ ○ ○ | ●● ●●<br>○ ○ ○ ○ | ●● ●●<br>○ ○ ○ ○ | ●● ●● ●●<br>○ ○ ○ ○ ○ ○ |
| ↻                                | ●●<br>○ ○      | ●● ●●<br>○ ○ ○ ○ | ●● ●● ●●<br>○ ○ ○ ○ ○ ○ | ●● ●●<br>○ ○ ○ ○ | ●● ●●<br>○ ○ ○ ○ | ●● ●●<br>○ ○ ○ ○ | ●● ●● ●●<br>○ ○ ○ ○ ○ ○ |

| LAS1-BGQ-□X/◆●●<br>LAS1-BGQ-□Y/◆●● |   | Material | Button | Stainless steel | LAS1GQ-□Y/2     |   | Material | Button | Stainless steel/<br>Black anodized aluminium alloy |
|------------------------------------|---|----------|--------|-----------------|-----------------|---|----------|--------|--|
|                                    |   |          | Body   | Stainless steel |                 |   |          | Body   | Stainless steel/<br>Black anodized aluminium alloy |
|                                    |   | Base     |        | PBT/PA          |                 |   | Base     |        | PA/PC  |
| Switching                          | Za(double-break fast-motion changeover contact) |          |        |                 | Switching       | Za(double-break fast-motion changeover contact) |          |        |  |
| Panel Thickness                    | 1 ~ 10mm  |          |        |                 | Panel Thickness | 1 ~ 10mm(LAS1GQ)                                |          |        |  |
| Mechanical Life                    | 200,000 cycles                                  |          |        |                 | Mechanical Life | 1,000,000 cycles                                |          |        |  |
| Electrical Life                    | 50,000 cycles                                   |          |        |                 | Electrical Life | 50,000 cycles                                   |          |        |  |
| Torque                             | 0.8Nm   |          |        |                 | Torque          | 0.8Nm   |          |        |  |
|                                    |   | RoHS     |        | Made to order   |                 |   | RoHS     |        | Made to order                                      |